



Introduction

Since its inception in 2010, the Railyard Park Conservancy (RPC) – formerly the Railyard Stewards – has delivered high-quality services to the City of Santa Fe through an annual Professional Services Agreement, ensuring that the Railyard Park lives up to the original community vision as an environmentally sustainable greenspace offering public engagement and cultural enrichment. To that end, we collaborate with the City of Santa Fe, the Santa Fe Railyard Community Corporation and the Santa Fe Conservation Trust to comply with the 13-acre Conservation Easement under which the Park + Plaza operate.

The RPC's mission is to provide community stewardship and advocacy for the horticultural care, educational programming and public art in the Railyard Park + Plaza. Our work entails maintaining the Park's gardens and social spaces, offering free cultural and educational programming to the City's communities, and supporting the biological resilience of the Park's complex urban environment. All of our programming is free and open to the public, and includes field trips, nature-based play, green job skills training, grassland restoration, adult and youth volunteer opportunities and temporary public art exhibitions.

The 2022-2023 fiscal year was our most successful in recent years, with program and volunteer participation finally reaching, or exceeding, pre-pandemic levels. This was due to the growing popularity of existing programs (Sand Play Saturday and Graze Days), as well as to the return of others (field trips and our annual Earth Day celebration). Our horticulture efforts benefited from sustained moisture throughout most of the fiscal year, bringing much-needed relief to the landscape after severe drought and ongoing issues with the Park's irrigation system. Below are details outlining the RPC's work between July 1, 2022 – June 30, 2023. Our Board of Directors, staff and volunteers thank the City for its continued support and collaboration.

The Railyard Park Conservancy Staff, Board of Directors & Advisory Committees

The RPC executes its mission using a small, four-person staff and a dedicated group of community volunteers. Our work is informed by a volunteer Board of Directors and four volunteer Advisory Committees that meet throughout the year to set organizational goals and priorities.

Board of Directors	Horticulture Advisory Committee	Children's Advisory Committee	Development Committee	Railyard Art Project Committee	Staff
Jennifer Jenkins (Chair)	Molly Mehaffy	Priscilla Shannon Gutierrez	Anne Nelson	Molly Mehaffy	Izzy Barr (Executive Director, full-time)
Anne Nelson (Secretary)	Anne Nelson	Janice Vascott	Anne Culp	Matthew Chase-Daniel	Peggyjoy Hodgen (Horticulture Program Coordinator, full-time)
Max Meyers (Treasurer)		Tish Wilson	Priscilla Shannon Gutierrez	Lynn Grimes	Corey Pritts (Marketing Director, part-time, partially grant-funded)
Lynn Grimes		Abby Feldman	Calvin Fields	Brandee Caoba	Juliet Staveley (Early Childhood Educator, part-time, grant-funded)
Priscilla Shannon Gutierrez		Ellen Biederman		Brooke Scarborough	
Molly Mehaffy		Barbara Anschel		Melissa Houser	
		Anne Nelson		Robert Siqueiros	
		Lynn Grimes		Valerie Michael	
		Ellen Feldman		Aurelia Gomez	
				Maria Luisa Minjares	

Staff/Board Changes FY22-23 – After serving on an interim basis for nine months, Izzy Barr was named RPC Executive Director as of January 1st, 2023. There were no other staff or board changes in FY22-23.

The Railyard Park Conservancy Community Partners

Academy for Technology & the Classics
 Acequia Madre Association
 Acequia Madre Elementary School
 Aspen Community School
 Axle Contemporary
 Bike Santa Fe
 Brindle Foundation
 Cerise Consulting
 City of Santa Fe
 City of Santa Fe Arts & Culture Commission
 CoLab Initiative
 Community Educator's Network
 Del Norte LOV Foundation
 Desert Montessori
 Earth Care
 Gerard's House
 Glorieta Camps
 Horned Locust Goatscaping
 International Folk Art Market
 LANL Foundation
 MFUGE Youth Group
 Milagro Middle School
 Native Plant Society of New Mexico
 New Mexico Department of Agriculture
 New Mexico Healthy Soils Working Group
 New Mexico Outdoor Recreation Division
 New Mexico School for the Deaf
 Nusenda Credit Union

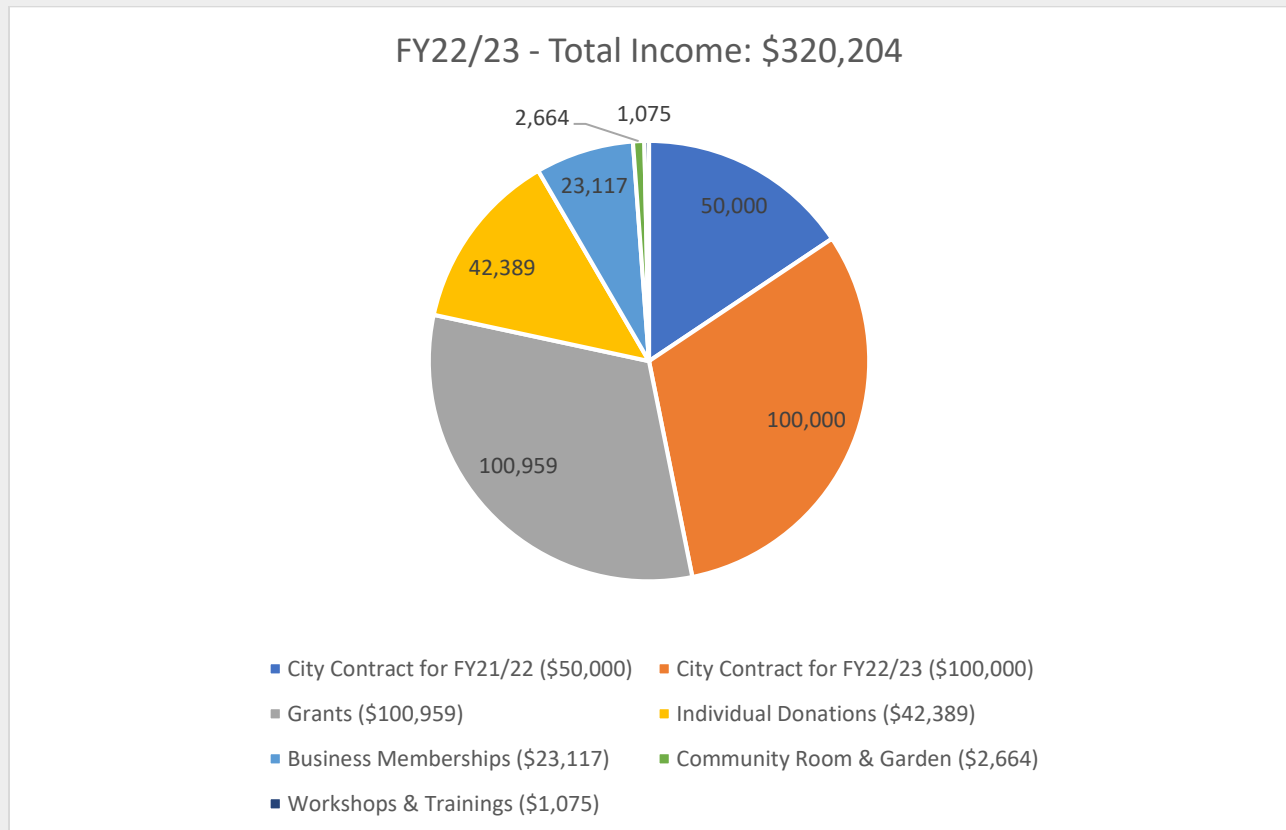
Pinon Elementary School
 Plants of the Southwest
 Positive Solar Energy
 Presbyterian Medical Service's Early Head Start
 Queen Bee Music Association
 Quivira Coalition
 Randall Davey Audubon Center & Sanctuary
 Reunity Resources
 Rio Grande Elementary School
 Rocky Mountain Youth Corps
 Safe Routes to Schools
 Santa Fe Children's Museum
 Santa Fe Conservation Trust
 Santa Fe High School
 Santa Fe Labyrinth Resource Group
 Santa Fe Metropolitan Planning Organization
 Santa Fe Public Spaces Tree Inventory
 Santa Fe Railyard Community Corporation
 Santa Fe Raptor Center
 Santa Fe Wadaiko Drummers
 SITE Santa Fe
 Southwestern College/Tierra Nueva Counseling Ctr.
 The MASTERS Program Charter School
 Turquoise Trail Charter School
 We Grow Eco
 Wise Fool New Mexico
 YouthWorks
 Xerxes Society

Railyard Park Voted Best Park

2012	2021
2019	2022
2020	2023



Railyard Park Conservancy Fundraising and Additional Contributions FY22-23



Grant Funding FY22-23: \$100,959 TOTAL

Brindle Foundation – \$30,000 for nature-based play programming in 2022-2023

Presbyterian Medical Services – \$23,201 for nature-based play programming in 2022-2023

NM Department of Agriculture – \$10,518 for our Healthy Soils initiative in FY22-23

Outdoor Equity Fund – \$13,500 for K-5 field trips in 2023

City of SF Arts & Culture Commission – \$10,000 for the Railyard Art Project in FY22-23

Native Plant Society of NM – \$900 to print “Wildflowers of the Railyard Park” booklet in 2023

New Mexico Finance Authority – \$7,840 to support general operations in 2022

LANL Foundation - \$5,000 to support general operations in 2023

Additional Grant Applications Submitted FY22-23

New Mexico Department of Agriculture – awarded \$16,489 for our Healthy Soils initiative in FY23-24

City of Santa Fe Arts & Culture Department – awarded \$10,000 for FY23-24

Sustaining NM Fund – pending, \$10,000 to support general operations in 2023-2024

Frost Foundation – denied

Del Norte LOV Foundation – denied

New Mexico Children’s Foundation – denied

Golden Pear Award – denied

Awesome Foundation – denied

Encantado Foundation – denied

Railyard Park Conservancy Fundraising and Additional Contributions FY22-23, cont.

Supporting Business Memberships FY22-23	Santa Fe International Film Festival
Barker Realty	Architectural Alliance
Coop Consulting	Plex, Inc.
Jenkins Gavin, Inc.	
Enterprise Bank & Trust	In-Kind Business Support FY22-23
Del Norte Credit Union	Whoo's Donuts
Century Bank	Coates Tree Service
Surrounding Studios	PlayScapers
Whole Foods Market	Betsy Bauer Wrapped Rocks
Southwest Care	Xerces Society
Meow Wolf	Del Norte Credit Union
Nusenda Credit Union	
La Choza Restaurant	

Value-Added Contributions	FY22-23 Volunteer Hours	Dollar Equivalent
RPC Volunteer Contributions to Horticultural Care - (Independent Sector assigns national average for volunteers in 2022-2023 at \$28.54/hour)	2251	\$64,244
RPC Volunteer Contributions to Educational Programming - (Independent Sector assigns national average for volunteers in 2022-2023 at \$28.54/hour)	485	\$13,842
RPC Volunteer Contributions to Public Art - (Independent Sector assigns national average for volunteers in 2022-2023 at \$28.54/hour)	77	\$2,198
RPC Volunteer Board of Directors & Advisory Committee Contributions (\$75/hour – Specialized Skills)	285	\$21,375
Business Memberships	N/A	\$23,117
Grants & Foundations	N/A	\$100,959
Individual Donations	N/A	\$42,389
	Total Value Added	\$268,124

Horticultural Care FY22-23

Yardmasters Adult Volunteers – A year-round, drop-in program, Yardmasters (YM) is the backbone of our horticulture efforts in the Park. No matter the season, or the weather, this intrepid group brings both passion and expertise to its work. YM contributed 552 hours of specialized service in FY22-23, including pruning fruit trees, removing invasive species, reseeding the native grasslands and planting in the Pollinator Garden.



Yardmasters shore up the trumpet vines in the Entry Ramada in preparation for the 2023 International Folk Art Market.

Horticultural Care FY22-23, cont.



Thanks to an in-kind donation from the Xerces Society, YM volunteers added more plants to the thriving Pollinator Garden. The area attracts bees, butterflies, hummingbirds and other pollinators.



Horticultural Care FY22-23, cont.

Youth In-Service Volunteers – In FY22-23, student groups provided almost 1400 hours of volunteer service in the Park, removing weed barrier and invasive species, spreading compost and mulch, and tidying up the gardens. We're proud to help train and inspire the next generation of conservationists, including those from:

The MASTERS Program



MASTERS students help clean and prepare the Community Garden for spring planting.

Rio Grande School



Rio Grande 3rd graders inspect the Park's compost pile.

Horticultural Care FY22-23, cont.

Rocky Mountain Youth Corps



The RPC continued its ongoing green jobs training collaboration with Rocky Mountain Youth Corp and the New Mexico School for the Deaf.



Horticultural Care FY22-23, cont.

Glorieta Camps



The out of state volunteers from Glorieta Camps kicked off summer 2023 with almost 300 hours of service in just six days.

Horticultural Care FY22-23, cont.

Graze Days – With funding from the New Mexico Department of Agriculture, the RPC continued this highly successful collaboration with the Quivira Coalition and Horned Locust Goatscaping, serving 532 children and adults in FY22-23. Using prescribed grazing by sheep and goats, Graze Days aims to restore the Park's 2.1 acres of native grasslands, while educating the community about our Healthy Soils in the Railyard Park campaign.



Grazing along Guadalupe draws community interest in April 2023.

¿POR QUÉ CABRAS Y OVEJAS?

Acción de pezuñas, el pastoreo y el reciclaje del abono mejorar la salud de los pastizales nativos del parque en una manera orgánica y sostenible.

EL ABONO

¡Recicla los nutrientes en la tierra!



+

ACCIÓN DE PEZUÑAS

¡Permite que el agua se empape en la tierra!



+

EL PASTOREO

¡Estimula el crecimiento de las plantas!







TIERRA SALUDABLE:

- AIREACIÓN
- RETENCIÓN DEL AGUA
- CRECIMIENTO DE LA RAÍZ
- BIOLOGÍA DE LA TIERRA
- BIODIVERSIDAD

¿Puedes encontrar estas plantas en el Parque de Railyard?

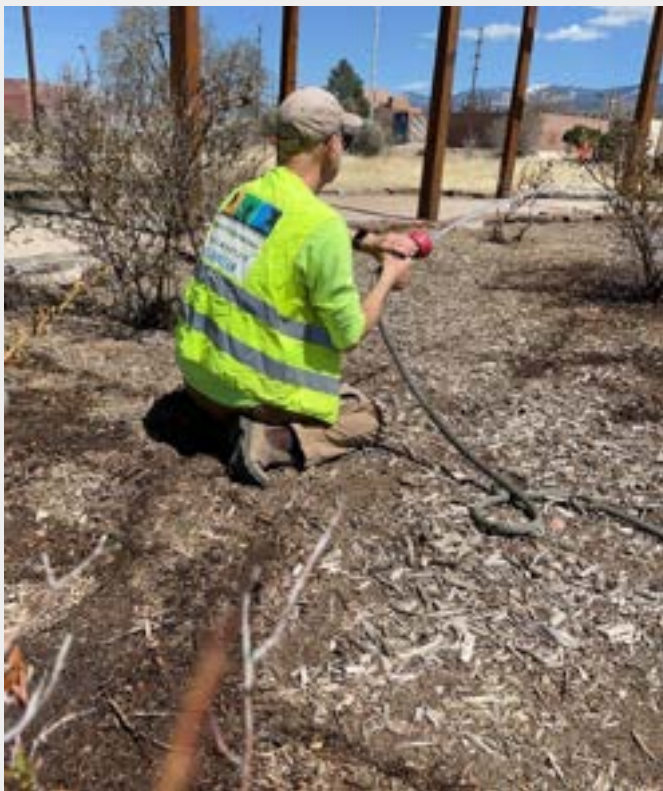
<p>PLANTAS RIBERENAS</p> 	<p>LAS HIERBAS:</p>  Festuca de Oveja  Bluestem Grande  Pasto de Trigo Occidental	<p>PLANTAS FLORECIENDOS:</p>  Millenrama  Penstemon de las Montañas Rocosas  Aster Morado	<p>LOS ARBUSTOS:</p>  Rosa de las Montañas Rocosas  Cinquefoil Arbustivo  Geosella Dorada	
	<p>LAS ESTRIBACIONES</p> 	<p>LAS HIERBAS:</p>  Grama Azul  Pasto Indio  Bluestem Pequeña	<p>PLANTAS FLORECIENDOS:</p>  Lino Azul  Equinácea de la Pradera  Malva visco	<p>LOS ARBUSTOS:</p>  Té Mormón  Salvia de Arena  Hierba de Oso






An A-Frame sign detailing the benefits of prescribed grazing, in both English and Spanish, is displayed at every Graze Days session.

Horticultural Care FY22-23, cont.



Water Warriors – Despite the difficulties of the job, which include hauling hundreds of feet of hose throughout the gardens, our Water Warriors are committed to helping the trees, shrubs and plants thrive. Their hard work is more essential than ever to the Park’s long-term biological health, especially with rising temperatures, ongoing drought, and a third of the irrigation system still not operational.

Early spring watering in the Rose Ramada.

Trash Busters – The unsung heroes of our horticultural team, Trash Buster volunteers keep the park looking neat and tidy by doing regular sweeps of the park, equipped with buckets, trash “picker-uppers” and trash bags.



Educational Programming FY22-23

Living Laboratory Field Trips – Thanks to a grant from the Outdoor Equity Fund, the RPC launched the Living Laboratory in the spring of 2023. Created in collaboration with Cerise Consulting, the field trip program is designed to engage K-5 students with outdoor learning and introduce them to real-world conservation solutions being practiced in the Park. Living Laboratory aims to serve 240 children in its first year.



Students from Aspen Community School and Pinon Elementary visited the park to learn about Habitat Comparisons and Compost Critters



Educational Programming FY22-23, cont.



Sand Play Saturday – Since 2016, the RPC has been offering Santa Fe families a morning of exploration, connection and creative play at Sand Play Saturday (SPS). Like all of our Children’s Programming, it is rooted in the growing body of evidence about the benefits of nature-based play for young children, which include increased concentration, better motor skills and reduced stress levels. Held in the Park’s beautifully designed sand area – and augmented each week by additional activities like mud play and nature journaling – SPS continues to grow in popularity, attracting more than 650 participants in FY22-23.



An infant taking his first ever steps in the sand.

Educational Programming FY22-23, cont.



Pop-Up Playground – Even an unseasonably cool and cloudy October day couldn't keep Santa Fe families from getting creative at our fourth Pop-Up Playground. More than 100 people, including Mayor Alan Weber, came out to build the ultimate fort city out of recycled material, while enjoying music from the Academy for Technology and the Classics' talented marimba band.



Queen B Kids Singalong – Queen B Music Association's weekly singalong on the park's Performance Lawn continued to grow in popularity, serving 280 children and 349 adults in FY22-23. Led by Teacher Sarah-Jane, the family-friendly get together featured a variety of engaging music games geared toward infants and toddlers.



Public Art FY22-23



Human Bird Nest – Constructed entirely on site from locally sourced plant material, artist Lindsay Brenner’s *Human Bird Nest* combined themes of sanctuary, rebirth and ecological resilience, offering park visitors a nurturing space to develop and expand ideas for positive growth. The Railyard Art Project (RAP) installation was funded by a grant from the City of Santa Fe’s Arts & Culture Commission, and ran from April-July of 2023.



More than 60 people attended The Great Cluster Flock in June 2023, a free community celebration of the Human Bird Nest featuring live music, stilt walking, face painting and more.

Public Art FY22-23, cont.



Going With the Flow – In April of 2023, RAP partnered with SITE Santa Fe to bring two pieces to the Railyard Park as part of SITE’s dynamic group exhibition, *Going With the Flow: Art, Actions, and Western Waters*. These included the sound installation *There Must Be Other Names for the River*, by Jessica Zeglin, Dylan McLaughlin, and Marisa Demarco; and *Fountain (Orphan)*, a large-scale sculpture by artist collective M12 Studio that used the figure of a hand water pump as an entry point into the complex relationship between surface water and groundwater in New Mexico and East Texas.

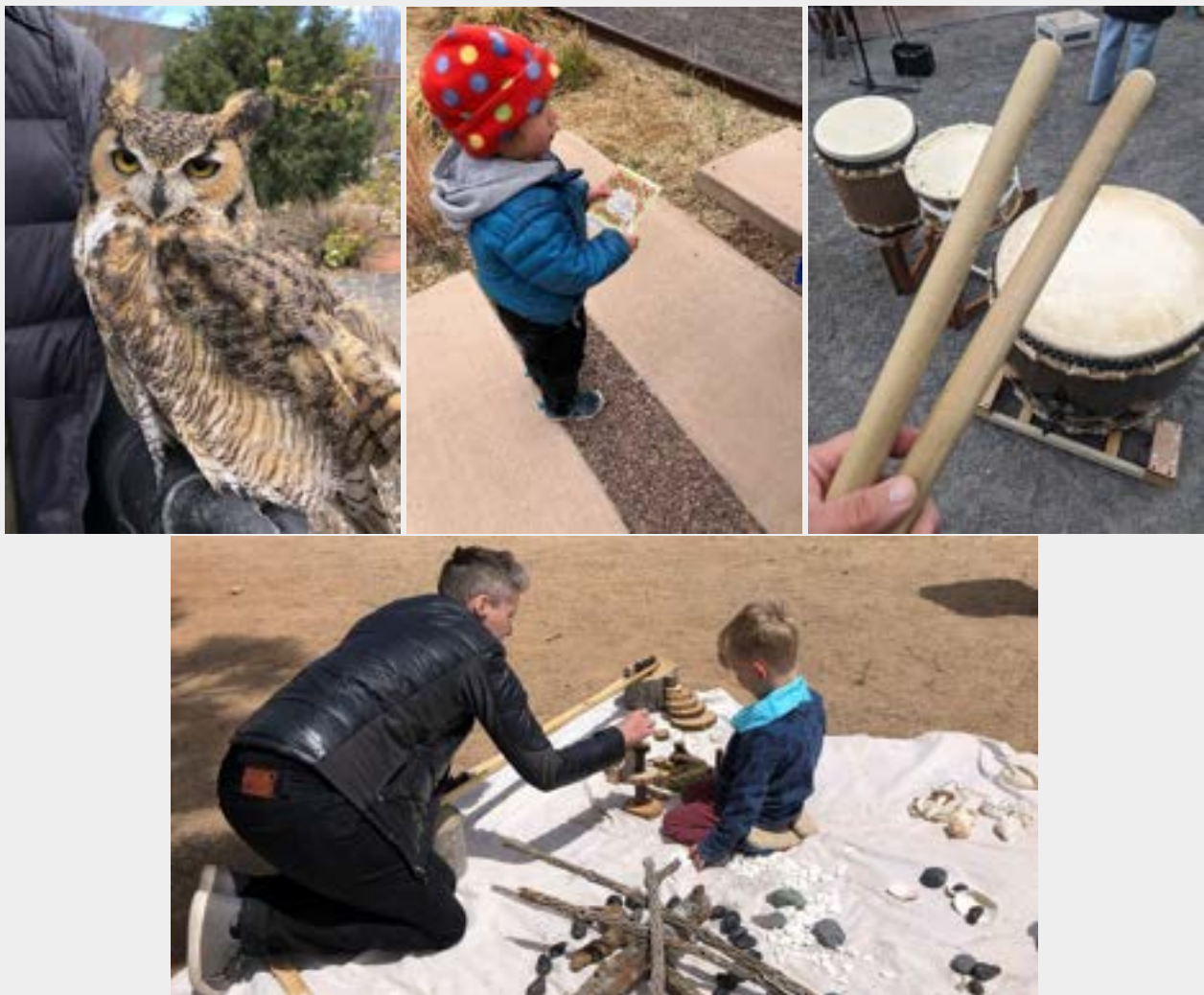
Axle Contemporary – In collaboration with RAP, Axle Contemporary hosted two exhibitions in the Railyard Park + Plaza in spring of 2023. Rick Phelps’s *Post Fiesta Wares* featured papier-maché and papier-collé sculptures that incorporated an array of materials, references and characters. *Project Interchange*, presented with Friends of the Orphan Signs, was a live text exchange between poets in Santa Fe and Albuquerque that was projected onto the side of El Museo Cultural.



Community Contributions FY22-23



Earth Day – On April 22, 2023, the RPC hosted its first in-person Earth Day event since 2019 with a community celebration of the beautiful biome that is the Railyard Park. Presented in collaboration with a dozen partner organizations – including the SF Children’s Museum, the Randall Davey Audubon Center, SITE Santa Fe, the SF Raptor Center and the Xerces Society – the event featured family-friendly activities like Graze Days, kids nature play, live music, public art exhibitions and a pollinator workshop, serving more than 150 kids and adults.



Community Contributions FY22-23, cont.



Bike Month – Despite cool and rainy weather, more than a dozen people (including one very adaptable infant) came out in May 2023 for our annual Coffee & Donuts on the Rail Trail. Hosted in collaboration with the Santa Fe Metropolitan Planning Organization (MPO), it was part of a community-wide series of events held in honor of Bike Month.

Community Picnic – For the second year in a row, the RPC kicked off the return of Movie Night in the Park with a Community Picnic. The event – which featured free drinks and snacks, kid-centric activities and Grab & Go kits donated by the Santa Fe Children’s Museum – attracted more than 60 youth and adults.



A local family enjoys some outdoor play at the Community Picnic in May 2023

Community Contributions FY22-23, cont.

Bluegrass & Bagels – On the second Sunday of every month, the RPC hosts this free, drop-in jam session in the park’s Community Room. More than 120 local musicians attended in FY22-23 to play their favorite GospelGrass, TradGrass and NewGrass tunes.



Nature-based play at Early Head Start, Earth Care and Southwestern College – With ongoing support from the Brindle Foundation, the RPC has continued its successful partnership with Presbyterian Medical Services to bring nature-based play programming to Early Head Start and Head Start classrooms throughout Santa Fe. Now in its second year, the project has served more than 500 local children and educators under the expert leadership of the RPC’s Early Childhood Educator, Juliet Staveley. The Brindle grant also includes funding for Sand Play programs at Earth Care and Southwestern College’s Tierra Nueva Counseling Center, allowing us to expand free nature play opportunities to families on Santa Fe’s underserved south side.



A toddler investigates seashells at River Center Early Head Start